

# ENGL CUSTOM SHOP ORDER



**PURCHASE ORDER NUMBER**

**DEALER CONTACT**

**AMPLIFIER S/N**

**1) AMP MODEL**

**2) CABINET MODEL**

**3) TOLEX COLOR**

**4) CORNERS**

**5) KNOBS**

**6) ILLUMINATION**

**7) NOTES**

## CUSTOM OPTIONS

1) **Amp Model:** Please select your preferred amplifier.

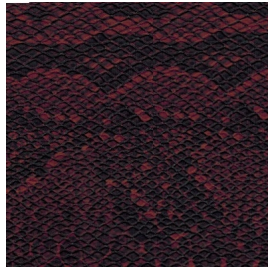
2) **Cabinet Model:** Please select your preferred cabinet.

3) **Tolex Colors:** Please select one of the following colors.  
Cabinet Color must match the Amp.

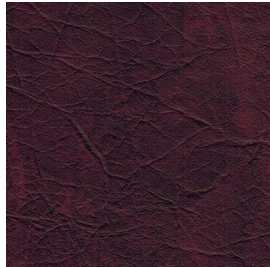
DARK SNAKESKIN



RED SNAKESKIN



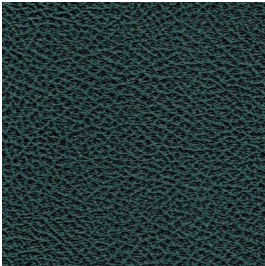
RETRO RED



PURPLE BRONCO



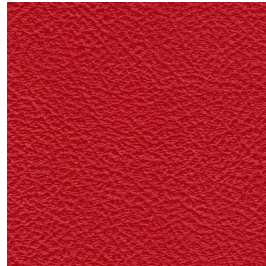
GREEN BRONCO



WHITE BRONCO



RED BRONCO



SILVER BRONCO



4) **Corners:** Please choose CHROME (STOCK) or BLACK SATIN corners.

5) **Knobs:** Please select the type of knobs you want to have installed.

x CHICKEN HEAD, CHICKEN HEAD ANODIZED SILVER and CHICKEN HEAD ENGL are not compatible with the following models:  
**E610II Savage 120 Mark II** and **E630II Savage 60 Mark II**.

x CHROME KNOB ENGL SE are only compatible with the following models:  
**E610II Savage 120 Mark II** and **E630 Savage 60 Mark II**.  
(These knobs are made of solid brass and have a chrome finish.)

6) **Illumination:** You can choose between the colors red, blue and green instead of the stock color. The Illumination includes the LED Tube Illumination and the color of the Power Switch or the respective status LED.